

FIG. 1

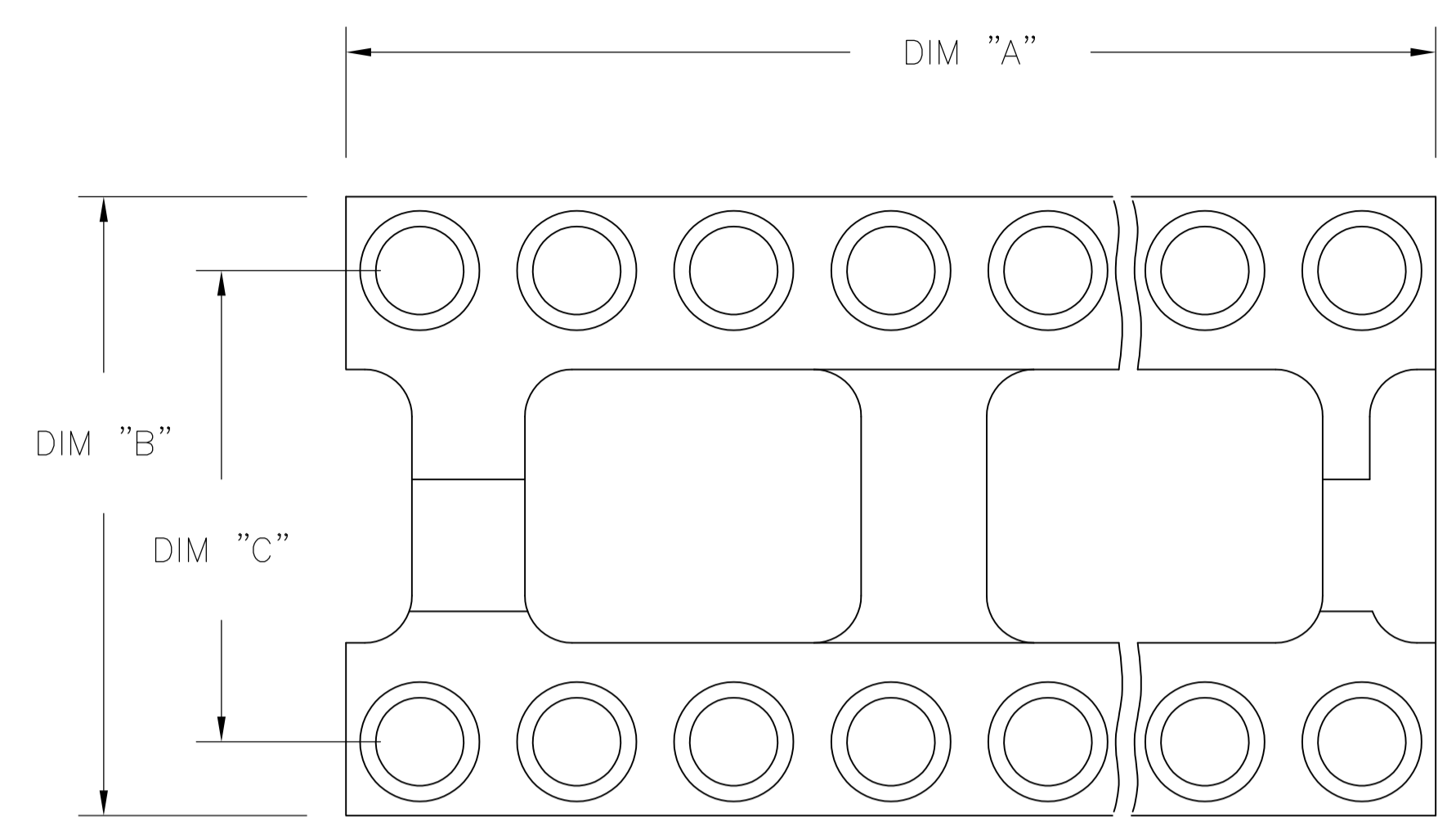


FIG. 2

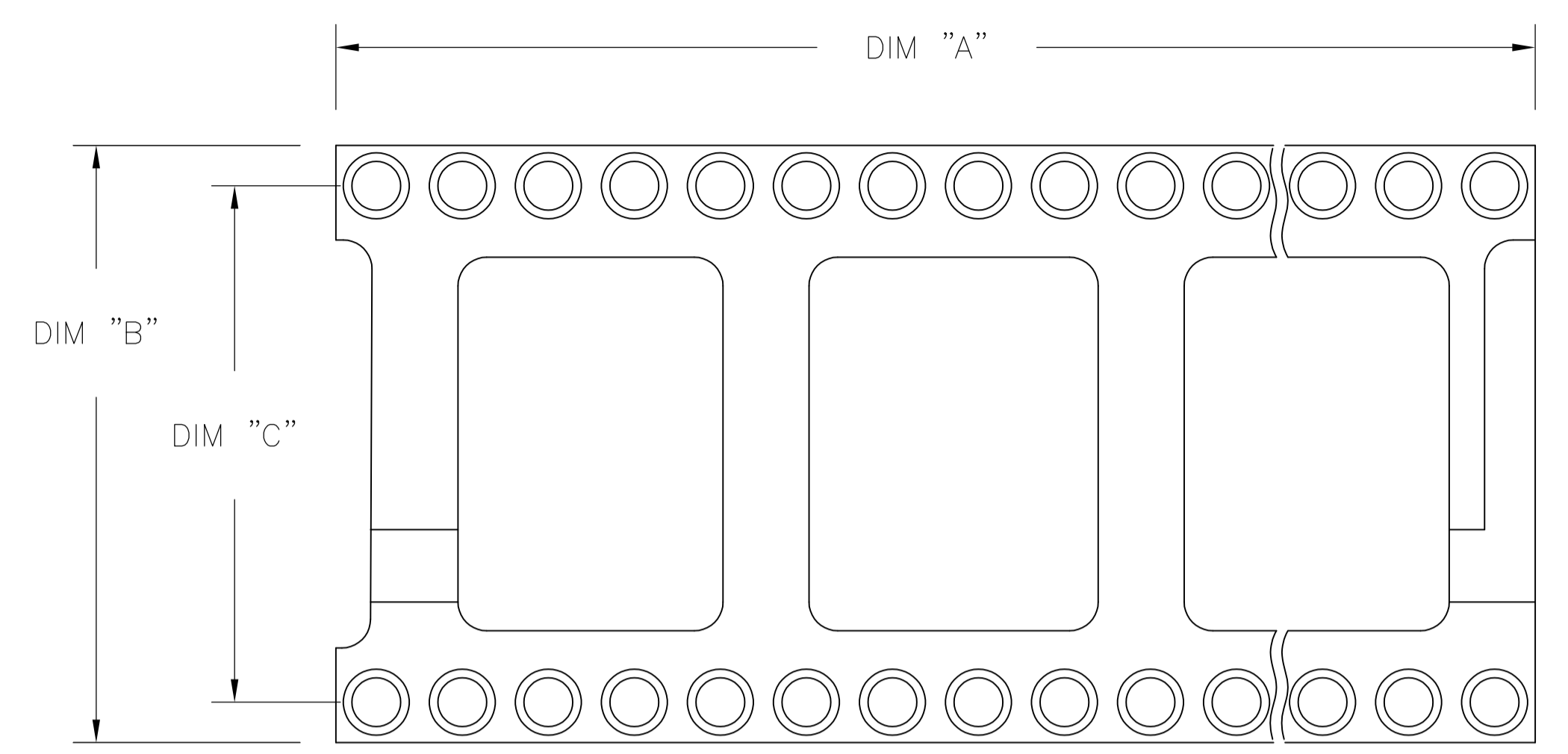
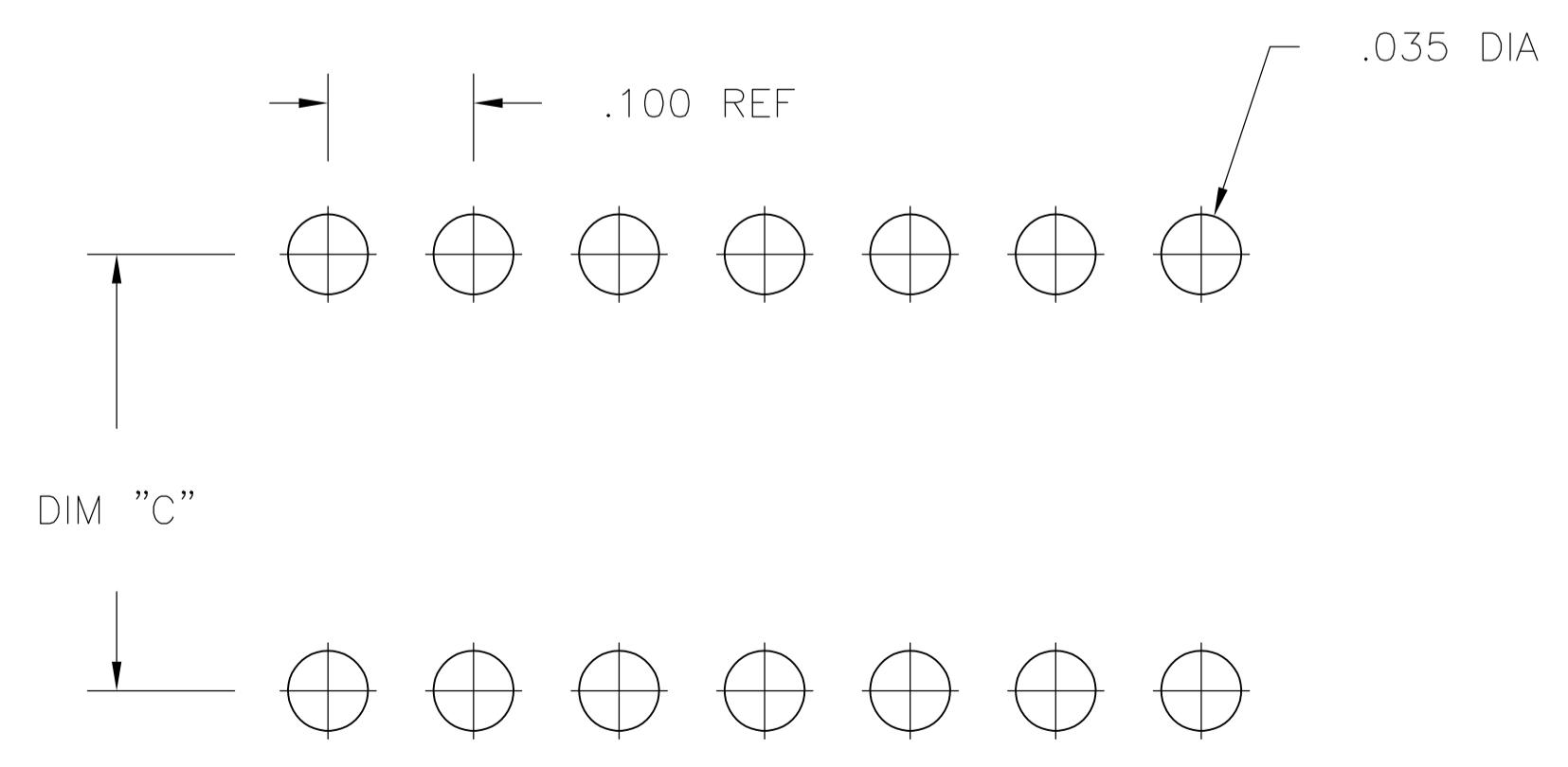
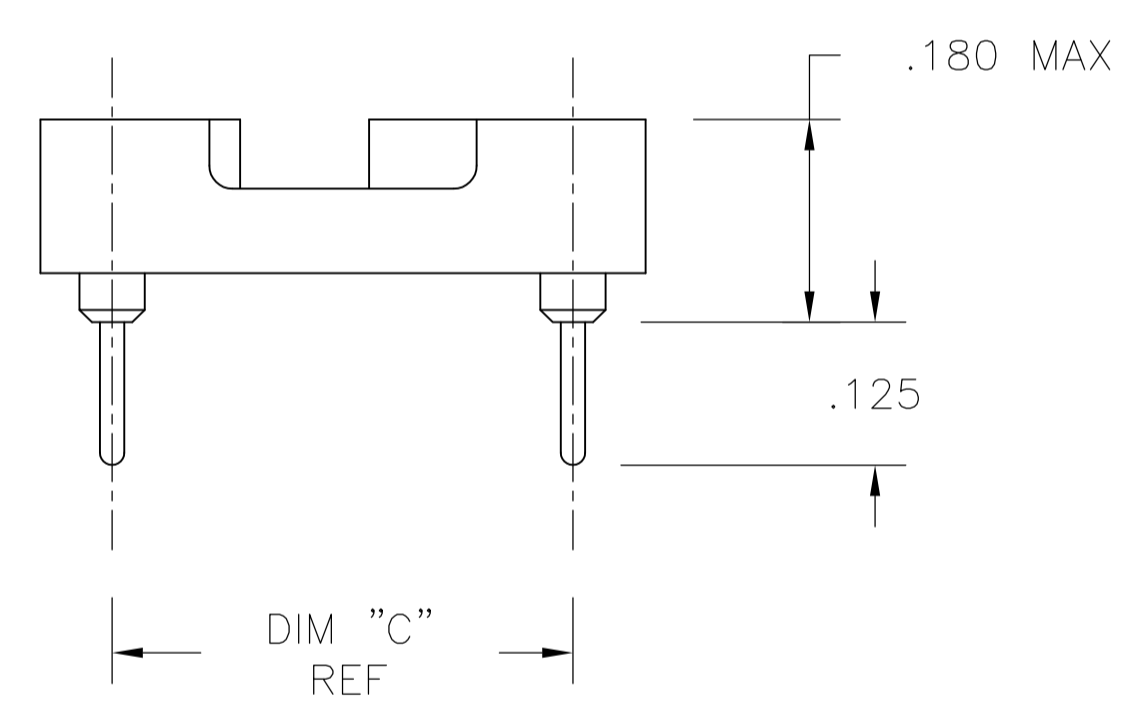
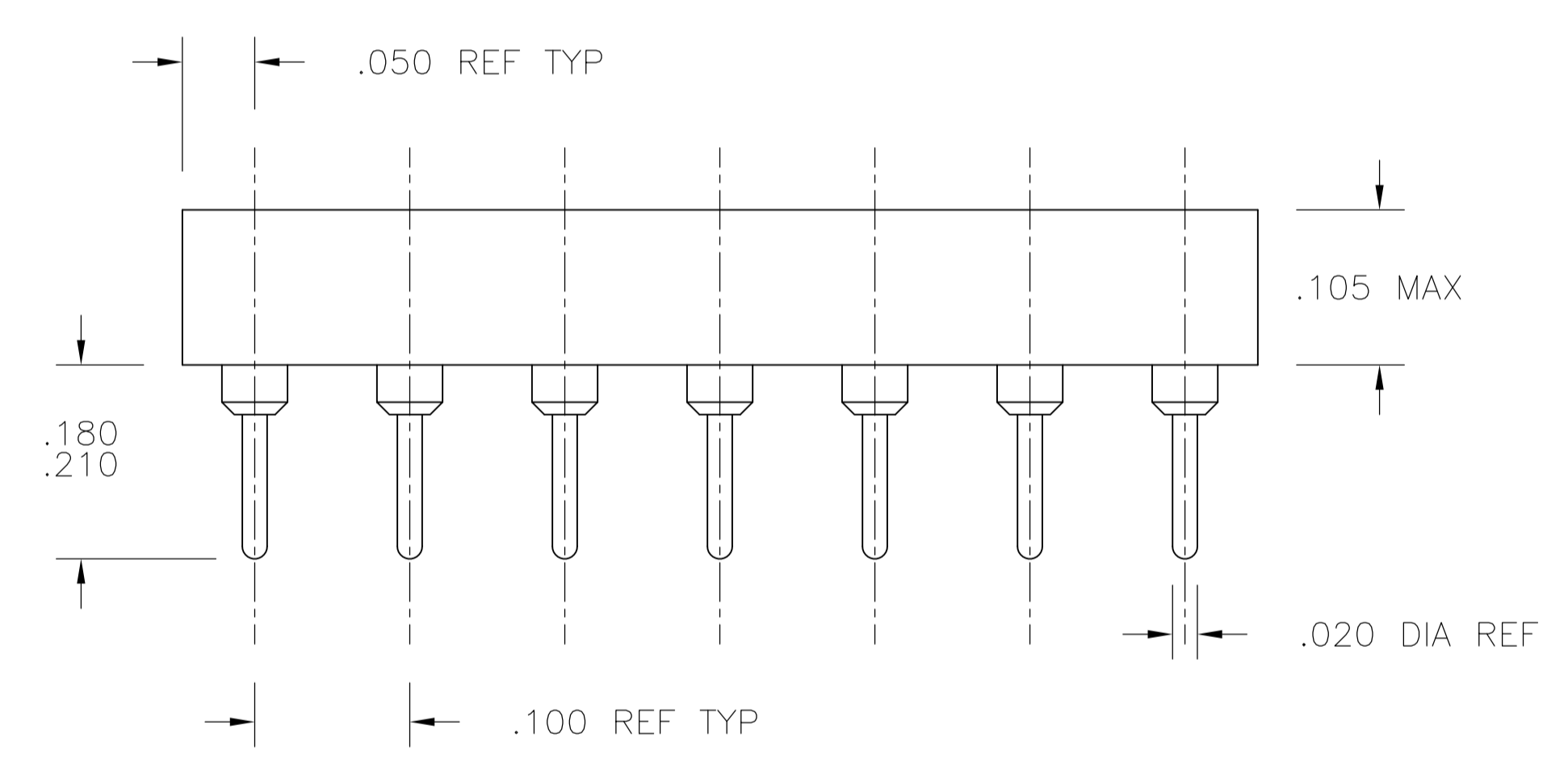


FIG. 3



P.C.B. HOLE LAYOUT
TOLERANCE ±.003

1. INSULATOR MATERIAL - THERMOPLASTIC POLYESTER, PCT, BLACK, UL94 V-0
2. STAMPED CONTACT - BECU, PLATED WITH 80-200μ" TIN (LEAD FREE) OVER 75-100μ" COPPER.
3. SLEEVE - COPPER, PLATED WITH 180-340μ" THK TIN (LEAD FREE) OVER 75-125μ" MIN NICKEL.
5. STAMPED CONTACT-BECU, PLATED WITH GOLD FLASH OVER 50-100μ" NICKEL
6. STAMPED CONTACT-BECU, PLATED WITH 20μ" MIN GOLD OVER 30-100μ" NICKEL.
7. ELECTRICAL:
 CONTACT RESISTANCE: 10 MILLIOHMS MAX
 CONTACT RATING: 3 AMPS
 CAPACITANCE: 1.0 pF PER MIL-STD-202, METHOD 305
 INSULATION RESISTANCE: 5000 OHMS MIN @ 500 VDC PER MIL-STD-1344, METHOD 3003.1
 DIELECTRIC WITHSTANDING VOLTAGE: 1000 VOLTS (RMS) PER MIL-STD-1344, METHOD 3001.1
8. MECHANICAL:
 INSERTION FORCE: 179 GRAMS AVG
 WITHDRAWAL FORCE: 63 GRAMS AVG
 "ACCEPTS IC PIN - .009"X.015" THROUGH .011"X.020", OR .016" TO .021" DIAMETER, .150/.105 LONG"
9. ENVIRONMENTAL:
 OPERATING TEMPERATURE: -55°C TO +105°C

THIS DRAWING IS A CONTROLLED DOCUMENT.		DIN: BSV	27JUL04	Tyco Electronics Corporation Harrisburg, Pa 17105-3608	
DIMENSIONS: INCHES		TOLERANCES UNLESS OTHERWISE SPECIFIED:		NAME: K. WRIGHT	
0. PLC ± -		1. PLC ± -		PRODUCT SPEC: OPEN FRAME DIP, ECONOMY (STAMPED CONTACT) (REF AUGAT 800 SERIES)	
1. PLC ± -		2. PLC ± -		APPLICATION SPEC: -	
2. PLC ± -		3. PLC ± .005		SIZE: A1	
3. PLC ± -		4. PLC ± -		CAGE CODE: 00779	
4. PLC ± -		ANGLES ± #		DRAWING NO: 1571552	
MATERIAL: SEE NOTES		FINISH: SEE NOTES		RESTRICTED TO: -	
		WEIGHT: -		SCALE: 4:1	
		CUSTOMER DRAWING		SHEET 1 OF 2	
				REV E2	

△ ₃ △ ₆	GOLD/TIN	.400±.005	.500	1.200	2	24	5-1571552-7
△ ₃ △ ₆	GOLD/TIN	.300±.005	.400	1.200	2	24	5-1571552-6
△ ₃ △ ₆	GOLD/TIN	.900±.005	1.000	3.200	3	64	5-1571552-5
△ ₃ △ ₆	GOLD/TIN	.600±.005	.700	2.400	3	48	5-1571552-4
△ ₃ △ ₆	GOLD/TIN	.600±.005	.700	2.100	3	42	5-1571552-3
△ ₃ △ ₆	GOLD/TIN	.600±.005	.700	2.000	3	40	5-1571552-2
△ ₃ △ ₆	GOLD/TIN	.600±.005	.700	1.800	3	36	5-1571552-1
△ ₃ △ ₆	GOLD/TIN	.600±.005	.700	1.600	3	32	5-1571552-0
△ ₃ △ ₆	GOLD/TIN	.600±.005	.700	1.400	2	28	4-1571552-9
△ ₃ △ ₆	GOLD/TIN	.600±.005	.700	1.200	2	24	4-1571552-8
△ ₃ △ ₆	GOLD/TIN	.400±.005	.500	1.100	2	22	4-1571552-7
△ ₃ △ ₆	GOLD/TIN	.300±.005	.400	1.000	2	20	4-1571552-6
△ ₃ △ ₆	GOLD/TIN	.300±.005	.400	.900	2	18	4-1571552-5
△ ₃ △ ₆	GOLD/TIN	.300±.005	.400	.800	2	16	4-1571552-4
△ ₃ △ ₆	GOLD/TIN	.300±.005	.400	.400	1	8	4-1571552-3
△ ₃ △ ₆	GOLD/TIN	.300±.005	.400	.700	2	14	4-1571552-2
△ ₃ △ ₅	G F/TIN	.400±.005	.500	1.200	2	24	3-1571552-7
△ ₃ △ ₅	G F/TIN	.300±.005	.400	1.200	2	24	3-1571552-6
△ ₃ △ ₅	G F/TIN	.900±.005	1.000	3.200	3	64	3-1571552-5
△ ₃ △ ₅	G F/TIN	.600±.005	.700	2.400	3	48	3-1571552-4
△ ₃ △ ₅	G F/TIN	.600±.005	.700	2.100	3	42	3-1571552-3
△ ₃ △ ₅	G F/TIN	.600±.005	.700	2.000	3	40	3-1571552-2
△ ₃ △ ₅	G F/TIN	.600±.005	.700	1.800	3	36	3-1571552-1
△ ₃ △ ₅	G F/TIN	.600±.005	.700	1.600	3	32	3-1571552-0
△ ₃ △ ₅	G F/TIN	.600±.005	.700	1.400	2	28	2-1571552-9
△ ₃ △ ₅	G F/TIN	.600±.005	.700	1.200	2	24	2-1571552-8
△ ₃ △ ₅	G F/TIN	.400±.005	.500	1.100	2	22	2-1571552-7
△ ₃ △ ₅	G F/TIN	.300±.005	.400	1.000	2	20	2-1571552-6
△ ₃ △ ₅	G F/TIN	.300±.005	.400	.900	2	18	2-1571552-5
△ ₃ △ ₅	G F/TIN	.300±.005	.400	.800	2	16	2-1571552-4
△ ₃ △ ₅	G F/TIN	.300±.005	.400	.700	2	14	2-1571552-3
△ ₃ △ ₅	G F/TIN	.300±.005	.400	.400	1	8	2-1571552-2
△ ₃ △ ₂	TIN/TIN	.400±.005	.500	1.200	2	24	1-1571552-7
△ ₃ △ ₂	TIN/TIN	.300±.005	.400	1.200	2	24	1-1571552-6
△ ₃ △ ₂	TIN/TIN	.900±.005	1.000	3.200	3	64	1-1571552-5
△ ₃ △ ₂	TIN/TIN	.600±.005	.700	2.400	3	48	1-1571552-4
△ ₃ △ ₂	TIN/TIN	.600±.005	.700	2.100	3	42	1-1571552-3
△ ₃ △ ₂	TIN/TIN	.600±.005	.700	2.000	3	40	1-1571552-2
△ ₃ △ ₂	TIN/TIN	.600±.005	.700	1.800	3	36	1-1571552-1
△ ₃ △ ₂	TIN/TIN	.600±.005	.700	1.600	3	32	1-1571552-0
△ ₃ △ ₂	TIN/TIN	.600±.005	.700	1.400	2	28	1571552-9
△ ₃ △ ₂	TIN/TIN	.600±.005	.700	1.200	2	24	1571552-8
△ ₃ △ ₂	TIN/TIN	.400±.005	.500	1.100	2	22	1571552-7
△ ₃ △ ₂	TIN/TIN	.300±.005	.400	1.000	2	20	1571552-6
△ ₃ △ ₂	TIN/TIN	.300±.005	.400	.900	2	18	1571552-5
△ ₃ △ ₂	TIN/TIN	.300±.005	.400	.800	2	16	1571552-4
△ ₃ △ ₂	TIN/TIN	.300±.005	.400	.700	2	14	1571552-3
△ ₃ △ ₂	TIN/TIN	.300±.005	.400	.400	1	8	1571552-2

FINISH CONTACT/SLEEVE	"C" MAX	"B" MAX	"A" MAX	FIG	NO. OF POSN	PART NO.
-----------------------	---------	---------	---------	-----	-------------	----------

THIS DRAWING IS A CONTROLLED DOCUMENT.		DIN BSV 27JUL04	Tyco Electronics Corporation Harrisburg, Pa 17105-3608	
DIMENSIONS: INCHES	TOLERANCES UNLESS OTHERWISE SPECIFIED:	APVD K. WRIGHT	NAME: OPEN FRAME DIP, ECONOMY (STAMPED CONTACT) (REF AUGAT 800 SERIES)	
0 PLC ± -	1 PLC ± -	PRODUCT SPEC	APPLICATION SPEC	
2 PLC ± -	3 PLC ± .005	SIZE	CAGE CODE	DRAWING NO
4 PLC ± -	ANGLES ± -	WEIGHT	A1 00779	1571552
MATERIAL SEE SHEET 1	FINISH SEE SHEET 1	CUSTOMER DRAWING	SCALE 1:1	SHEET 2 OF 2